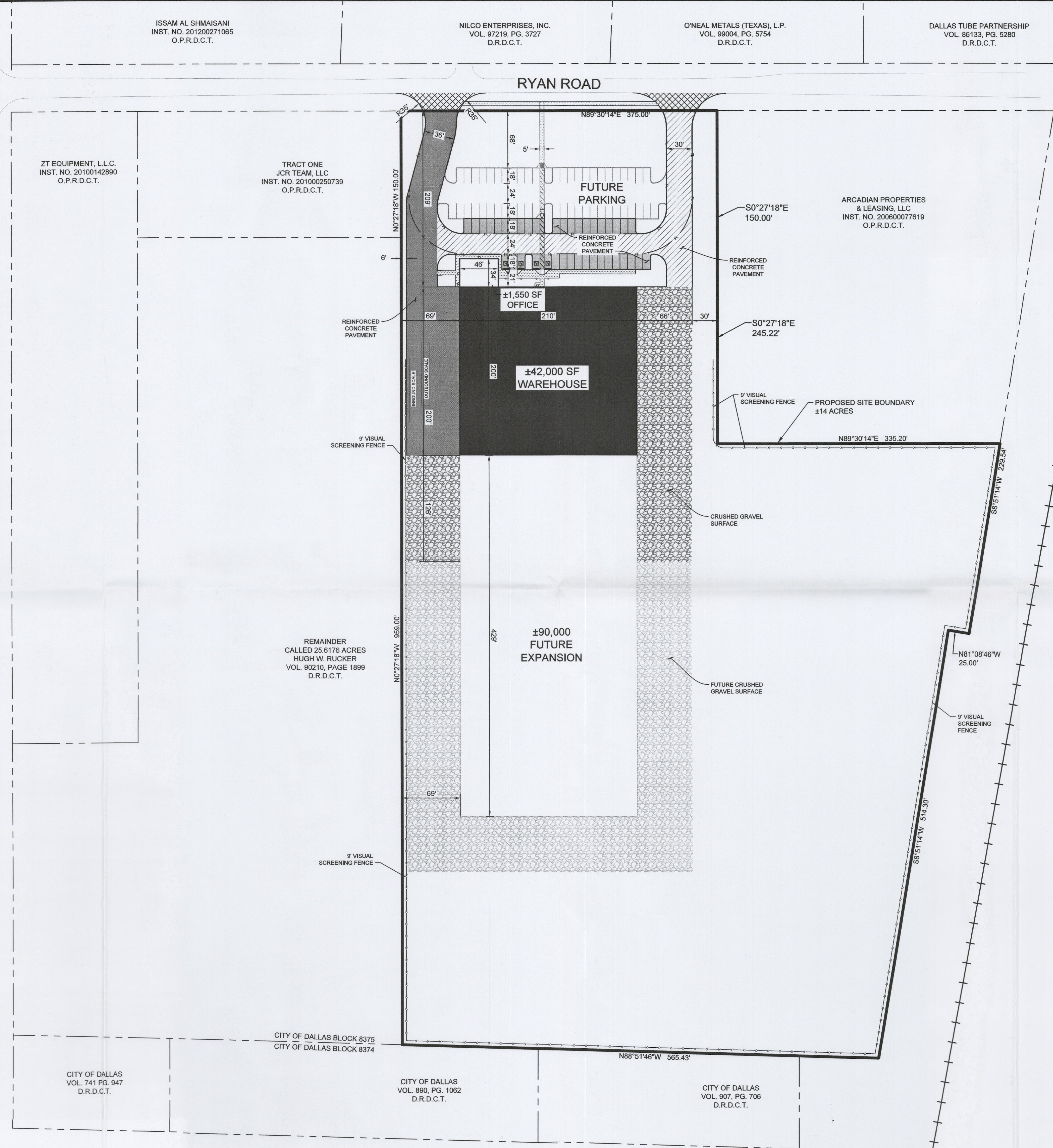


IMAGES
 XREF: D:\P\144\XREF\Site - XREF.dwg - XREF.dwg
 XREF: D:\P\144\XREF\Site - XREF.dwg - XREF.dwg
 DWG NAME: D:\P\144\XREF\Site - XREF.dwg
 LAST SAVED: 12/20/2017 10:51 AM

LUNA ROAD



ISSAM AL SHMAISANI
 INST. NO. 201200271065
 O.P.R.D.C.T.

NILCO ENTERPRISES, INC.
 VOL. 97219, PG. 3727
 D.R.D.C.T.

O'NEAL METALS (TEXAS), L.P.
 VOL. 98004, PG. 5754
 D.R.D.C.T.

DALLAS TUBE PARTNERSHIP
 VOL. 86133, PG. 5280
 D.R.D.C.T.

ZT EQUIPMENT, L.L.C.
 INST. NO. 20100142890
 O.P.R.D.C.T.

TRACT ONE
 JCR TEAM, LLC
 INST. NO. 201000250739
 O.P.R.D.C.T.

ARCADIAN PROPERTIES
 & LEASING, LLC
 INST. NO. 200600077619
 O.P.R.D.C.T.

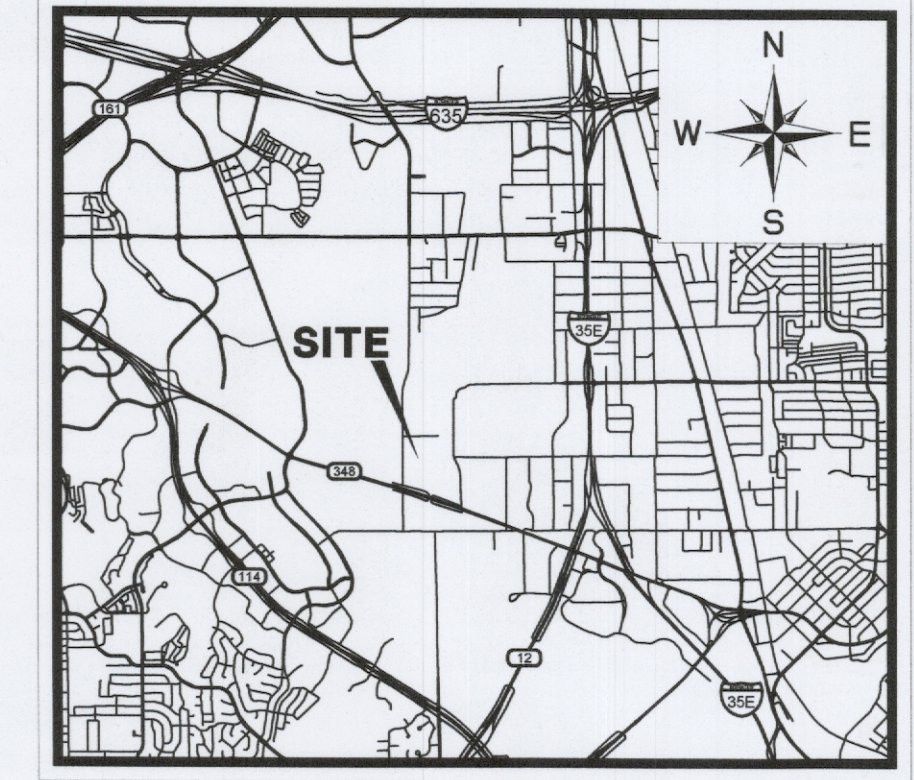
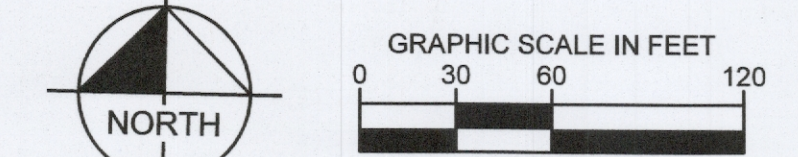
REMAINDER
 CALLED 25.6176 ACRES
 HUGH W. RUCKER
 VOL. 90210, PAGE 1899
 D.R.D.C.T.

CITY OF DALLAS
 VOL. 741 PG. 947
 D.R.D.C.T.

CITY OF DALLAS BLOCK 8375
 CITY OF DALLAS BLOCK 8374

CITY OF DALLAS
 VOL. 890, PG. 1062
 D.R.D.C.T.

CITY OF DALLAS
 VOL. 907, PG. 706
 D.R.D.C.T.



LOCATION MAP
 NOT-TO-SCALE

SUP SITE PLAN SUMMARY TABLE	
LAND AREA	605,136 SQUARE FEET
LAND USE	METAL SALVAGE FACILITY
PROPOSED LOT COVERAGE	±7%
FUTURE LOT COVERAGE	±22%
PROPOSED FLOOR AREA	43,550 SQUARE FEET
FUTURE FLOOR AREA	133,600 SQUARE FEET
BUILDING HEIGHT	40 FEET
PROPOSED PARKING REQUIRED	31 SPACES
TOTAL FUTURE PARKING REQUIRED	54 SPACES
PARKING PROPOSED	38 SPACES
TOTAL FUTURE PARKING	88 SPACES

* NOTE: THE MAXIMUM STACKING HEIGHT WILL COMPLY WITH HEIGHTS AND SETBACKS FOR A METAL SALVAGE FACILITY PER CHAPTER 51A

Kimley»Horn
 113455 Noel Rd, Two Galleria Office Tower, Suite 700
 Dallas, Texas 75240
 Tel (972) 770-1300
 Texas Registered Engineering Firm F-928 Fax (972) 239-3820

PRELIMINARY
 FOR REVIEW ONLY
 NOT FOR CONSTRUCTION PURPOSES
Kimley»Horn
 ENGINEERS, ARCHITECTS, PLANNERS
 P.E. No. 125257 Date: DECEMBER 2017

VENTURE METALS FACILITY
 RELOCATION
 PREPARED FOR
 VENTURE METALS
 DALLAS COUNTY, TEXAS

SUP SITE PLAN

Scale: AS SHOWN
 Designed by: DFG
 Drawn by: DSA
 Checked by: DFG
 Date: DEC 2017
 Project No. 64484200

SHEET
EX

CASE NO: 2145 -
 CASE NO: Z145 - 236(DJ)